



Advancing Health Equity in Minnesota

Sara Chute, Assistant Director, Center for Health Equity

PROTECTING, MAINTAINING AND IMPROVING THE HEALTH OF ALL MINNESOTANS

What Do You See?



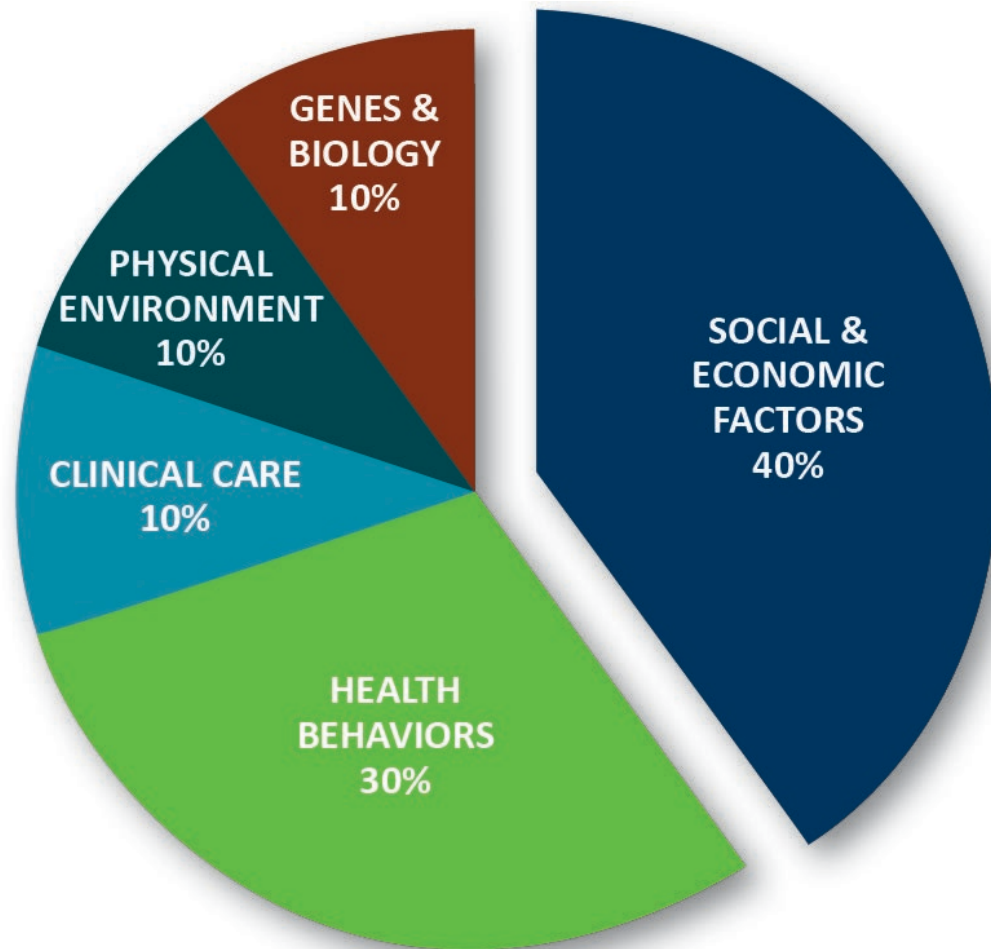
What is Health Equity?

The World Health Organization calls health, “a state of complete physical, mental and social well-being and not merely the absence of disease or infirmity.”

“Health equity is a state where all persons, regardless of race, creed, income, sexual orientation, gender identification, or age have the opportunity to reach their fullest health potential.”

- *Minnesota Department of Health, “Advancing Health Equity in Minnesota: Report to the Legislature.” 2014.*

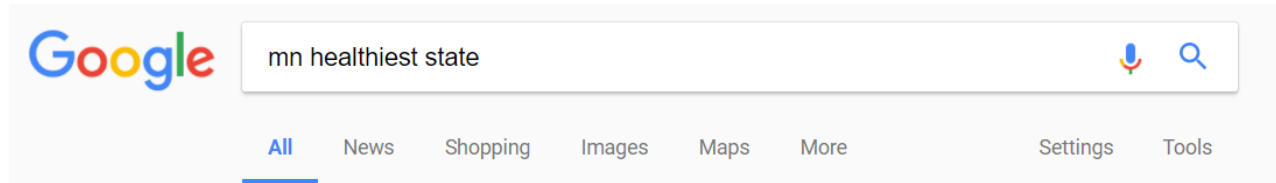
Expand understanding of what creates health



DETERMINANTS OF HEALTH

Necessary conditions for health (WHO)

- Peace
- Shelter
- Education
- Food
- Income
- Stable eco-system
- Sustainable resources
 - Mobility
 - Health Care
- Social justice and equity



About 62,400 results (0.53 seconds)

[Minnesota cited as 4th 'healthiest state' for second year in a row ...](https://www.minnpost.com/.../minnesota-cited-4th-healthiest-state-second-year-row)

<https://www.minnpost.com/.../minnesota-cited-4th-healthiest-state-second-year-row>

Dec 16, 2016 - **Minnesota** is the fourth **healthiest state** in the country for the second consecutive year, according to the Minnetonka-based United Health ...

[Minnesota ranks as healthiest state for seniors - St. Cloud Times](http://www.sctimes.com/story/news/local/.../2...minnesota...healthiest-state.../368215001/)

www.sctimes.com/story/news/local/.../2...minnesota...healthiest-state.../368215001/

Jun 3, 2017 - **Minnesota** has been deemed the **healthiest state** for senior citizens by a new national survey that examined 20-plus metrics across five ...

- Ranked #4 overall for health among all 50 states

[The 10 Healthiest States - and 10 Least-Healthy States - Health.com](http://www.health.com/.../the-10-healthiest-states-and-10-least-healthy-states)

www.health.com/.../the-10-healthiest-states-and-10-least-healthy-states

The **healthiest states** (and the least-healthy), based on obesity and cancer rates, lifestyle factors like smoking and exercise, and more.

[Minneapolis ranked #1 on America's Top 10 Healthiest Cities' List ...](http://www.minneapolislocal.com/.../minneapolis-ranks-no-1-on-americas-top-10-healthiest-cities)

[minneapolislocal.com/.../minneapolis-ranks-no-1-on-americas-top-10-healthiest-cities](http://www.minneapolislocal.com/.../minneapolis-ranks-no-1-on-americas-top-10-healthiest-cities)

Apr 6, 2015 - **Minnesota** ranks first on the list of the nation's top 10 healthiest cities. People in

Minnesota have figured out how to make use of the ...

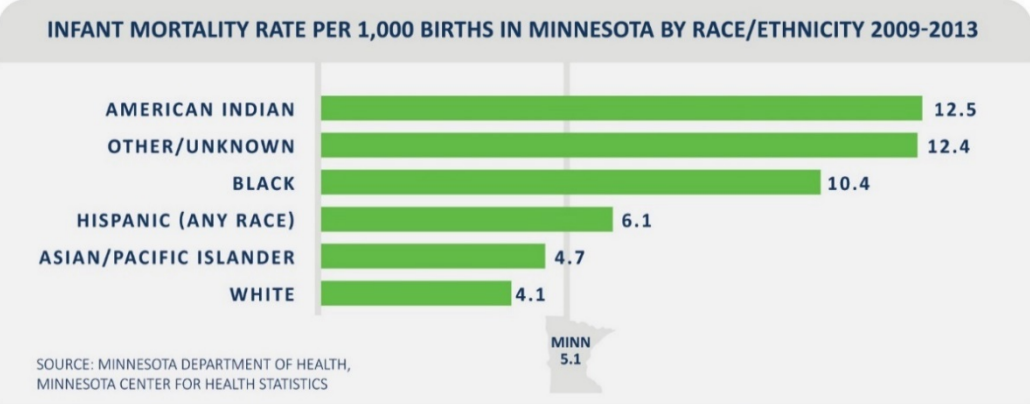
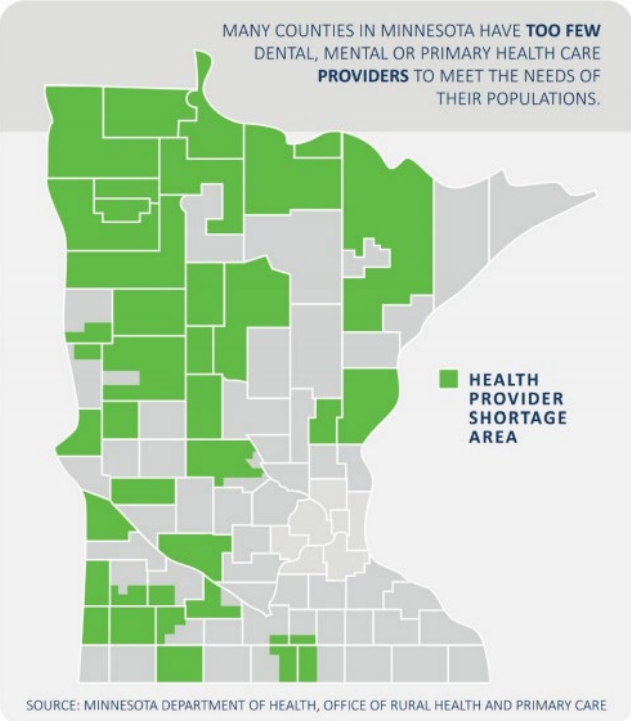
- Minneapolis ranked #2 on "America's Top 10 Healthiest Cities" list in 2016

[Explore Health Measures in Minnesota | 2015 Annual Report | AHR](http://www.americashealthrankings.org/explore/2015-annual-report/state/MN)

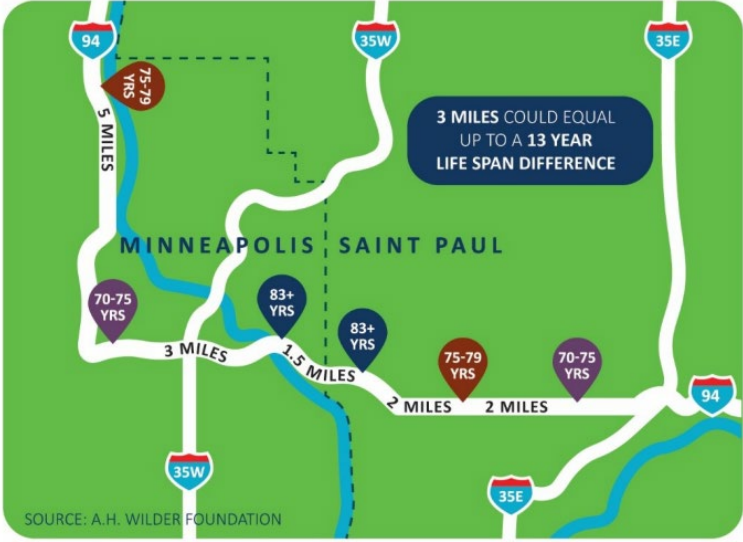
www.americashealthrankings.org/explore/2015-annual-report/state/MN

State-by-state study of our nation's health. See the strengths, challenges, and overall rank of each state, based on key health measures.

Why Health Equity?



IF WHITE BABIES IN MINNESOTA DIED AT THE SAME RATE AS AMERICAN INDIAN BABIES, **2,134** MORE WHITE BABIES WOULD HAVE DIED BETWEEN 2012 AND 2016.



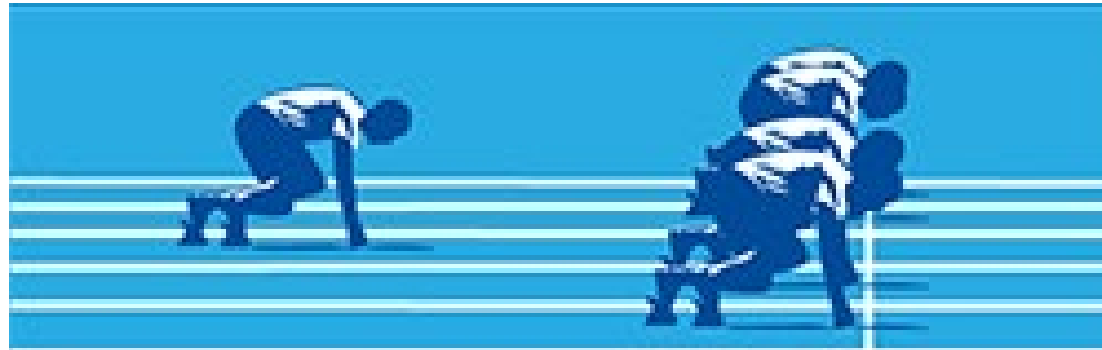
What is a health **inequity**?

A health inequity is a type of health difference that is closely linked with social, economic and/or environmental disadvantage.



Structural inequities

Structures or systems of society — such as finance, housing, transportation, education, social opportunities, etc. — that are structured in such a way that they benefit one population unfairly (whether intended or not).



Structural racism

A confluence of institutions, culture, history, ideology, and codified practices that generate and perpetuate inequity among racial groups.



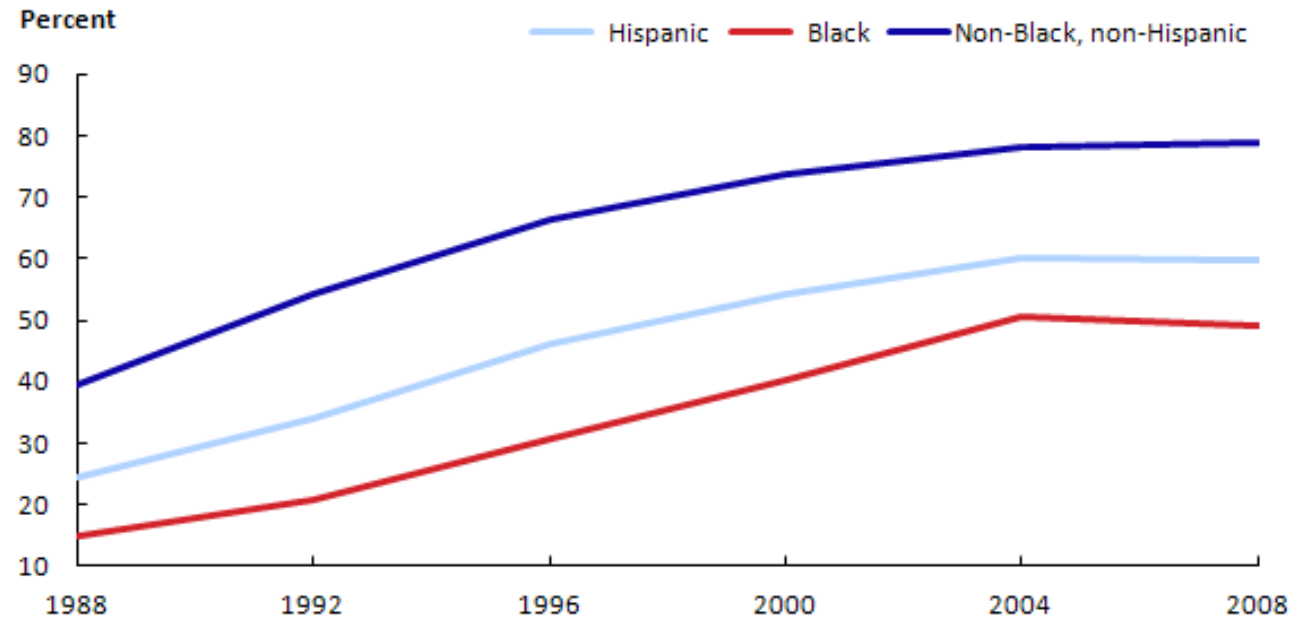
“Structural racism is normative, sometimes legalized, and often manifests as inherited disadvantage.”

-Rachel Hardeman, PhD, MPH

“Redlining: Still a thing”

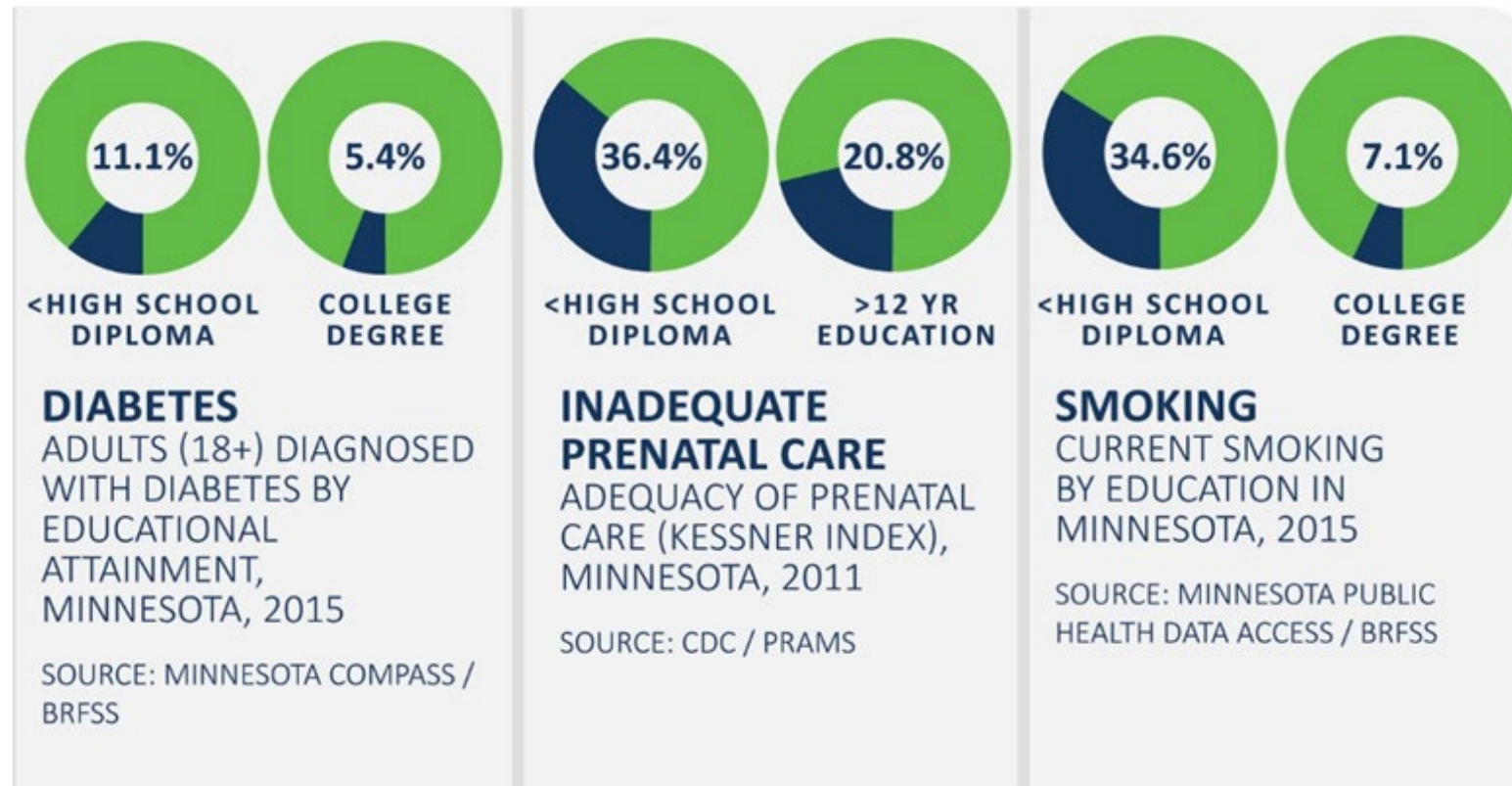
The Washington Post

Homeownership rates in the NLSY79, by race/ethnicity, selected years



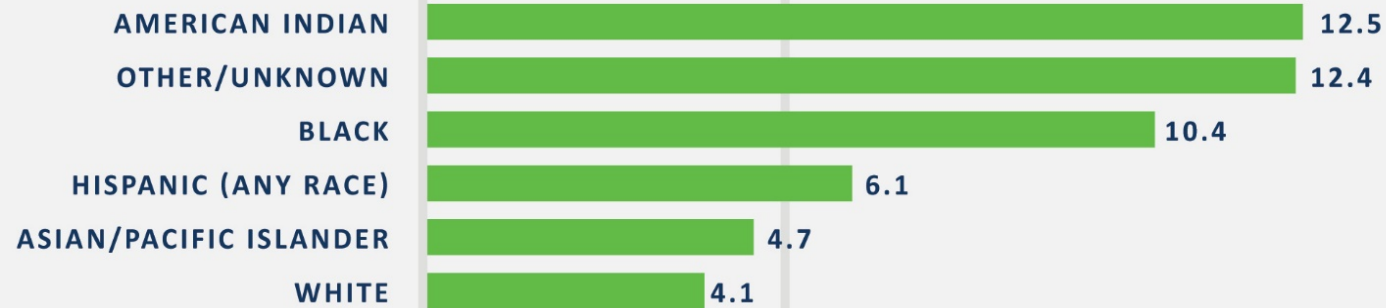
Note: Sample members of the NLSY79 are born from 1957 to 1964 and were living in the United States in 1979.
Source: U.S. Bureau of Labor Statistics, National Longitudinal Survey of Youth 1979 (NLSY79).

Connecting education to health



Belonging linked to infant mortality

INFANT MORTALITY RATE PER 1,000 BIRTHS IN MINNESOTA BY RACE/ETHNICITY 2009-2013



SOURCE: MINNESOTA DEPARTMENT OF HEALTH,
MINNESOTA CENTER FOR HEALTH STATISTICS

MINN
5.1

IF WHITE BABIES IN MINNESOTA DIED AT THE SAME RATE AS AMERICAN INDIAN BABIES,
2,134 MORE WHITE BABIES WOULD HAVE DIED BETWEEN 2012 AND 2016.

What are examples of health inequities that you know of?



A photograph of a man with short dark hair, seen from the side, holding a baby. The baby is laughing joyfully. The man is wearing a dark blue t-shirt, and the baby is wearing a purple and white striped shirt. The background is a soft, light blue sky. A large, semi-transparent dark blue circle is overlaid on the right side of the image, containing white text.

**So what
are we
doing
about it?**

MDH & CHE Mission

- MDH's mission is protecting, maintaining and improving the health of all Minnesotans.
- MDH's vision is for health equity in Minnesota, where all communities are thriving and all people have what they need to be healthy.
- The Center for Health Equity's mission is to **CONNECT, STRENGTHEN & AMPLIFY** health equity efforts within MDH and across the state of MN.

What is the Center for Health Equity?

Advancing Health Equity in Minnesota

Report to the Legislature

MINNESOTA
MDH
DEPARTMENT OF HEALTH

Commissioner's Office
625 Robert St. N.
P.O. Box 64975
St. Paul, MN 55164-0975
651-201-4989
www.health.state.mn.us

February 2014

MDH directed by Legislature in 2013 to prepare a report on Advancing Health Equity in MN

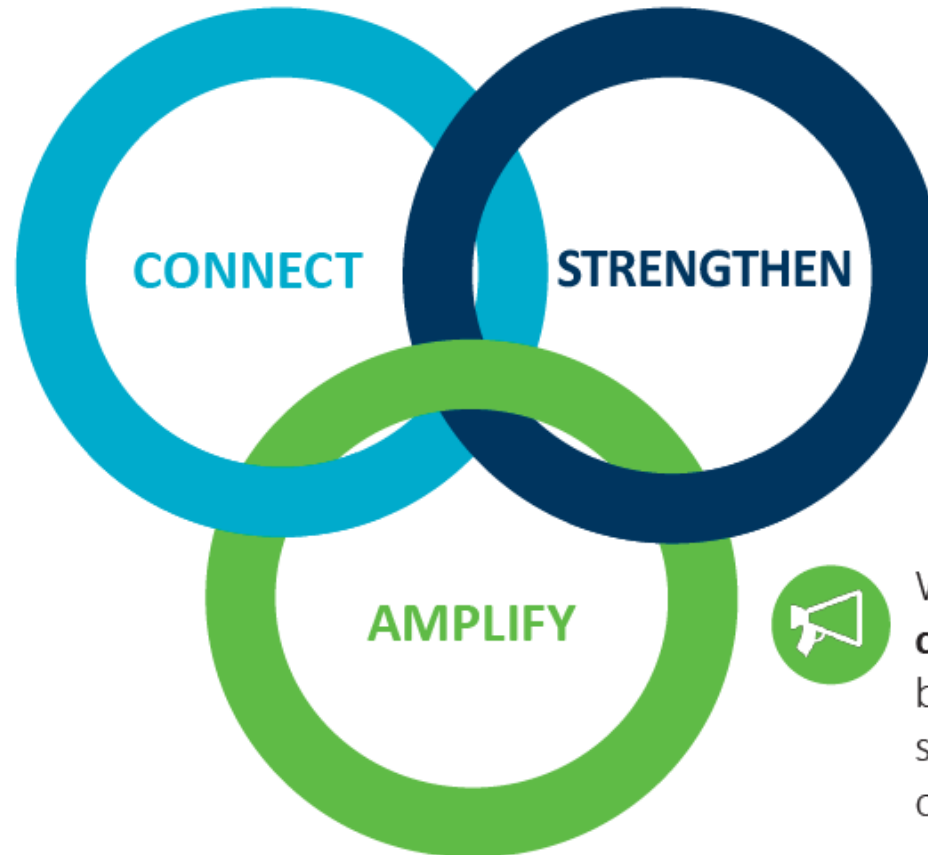
1. To provide an overview of MN's health disparities and health inequities
2. To identify inequitable conditions that produce health disparities
3. To make recommendations to advance HE in MN

What is the Center for Health Equity? (continued)

- Current evolution of former Office of Minority & Multicultural Health (OMMH)
- Established by the Commissioner of Health in 2013 to bring an overt and explicit focus to the efforts of MDH to advance health equity in MN.
- Works to achieve MDH vision of:
 - “Health equity in Minnesota, where all communities are thriving and all people have what they need to be healthy”

CHE Mission

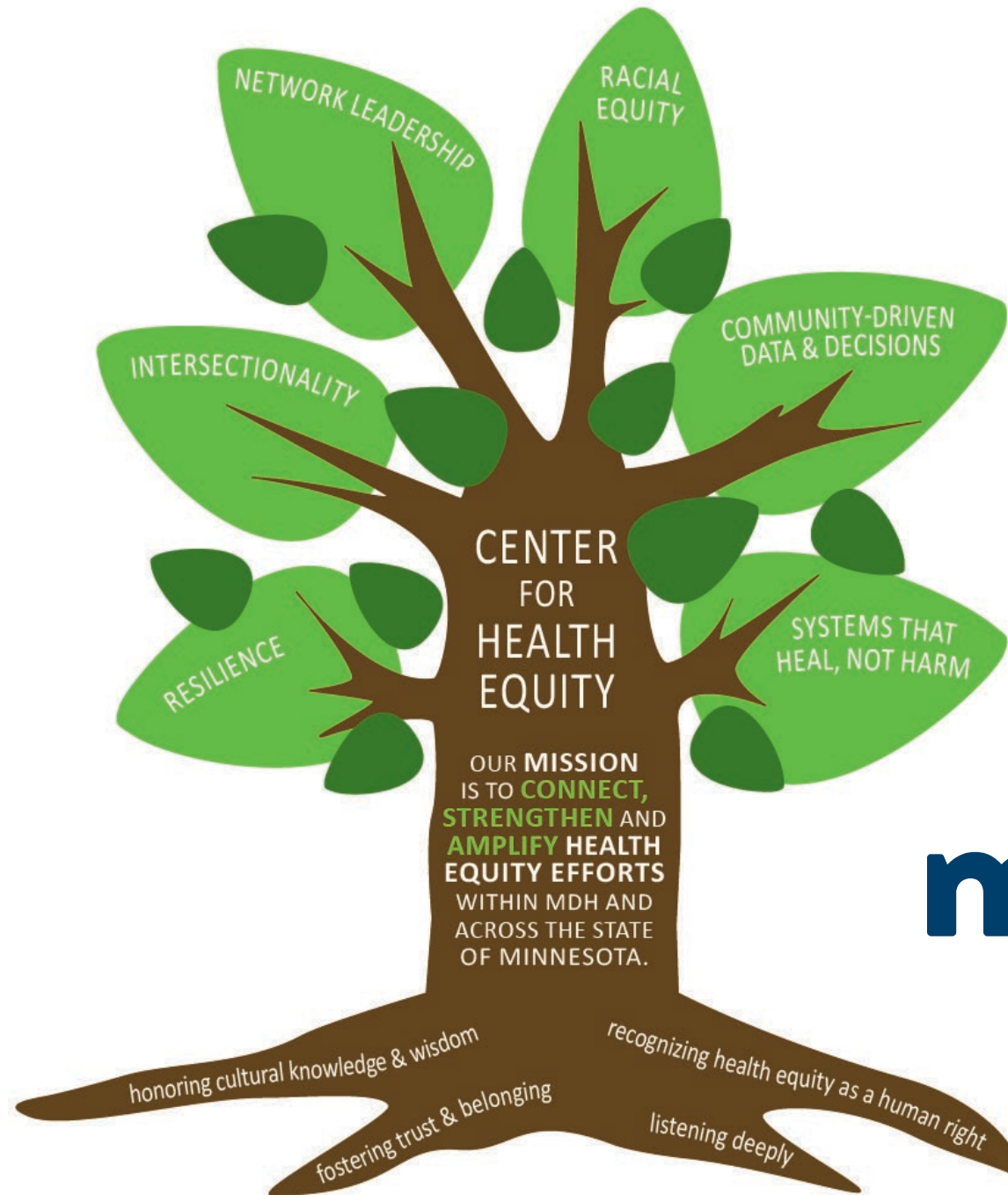
We are a **network hub**, leading, connecting and strengthening networks of health equity leaders and partners across MDH and Minnesota communities.



We provide **leadership in advancing health equity** and cultivate health equity leaders within MDH and across Minnesota communities.

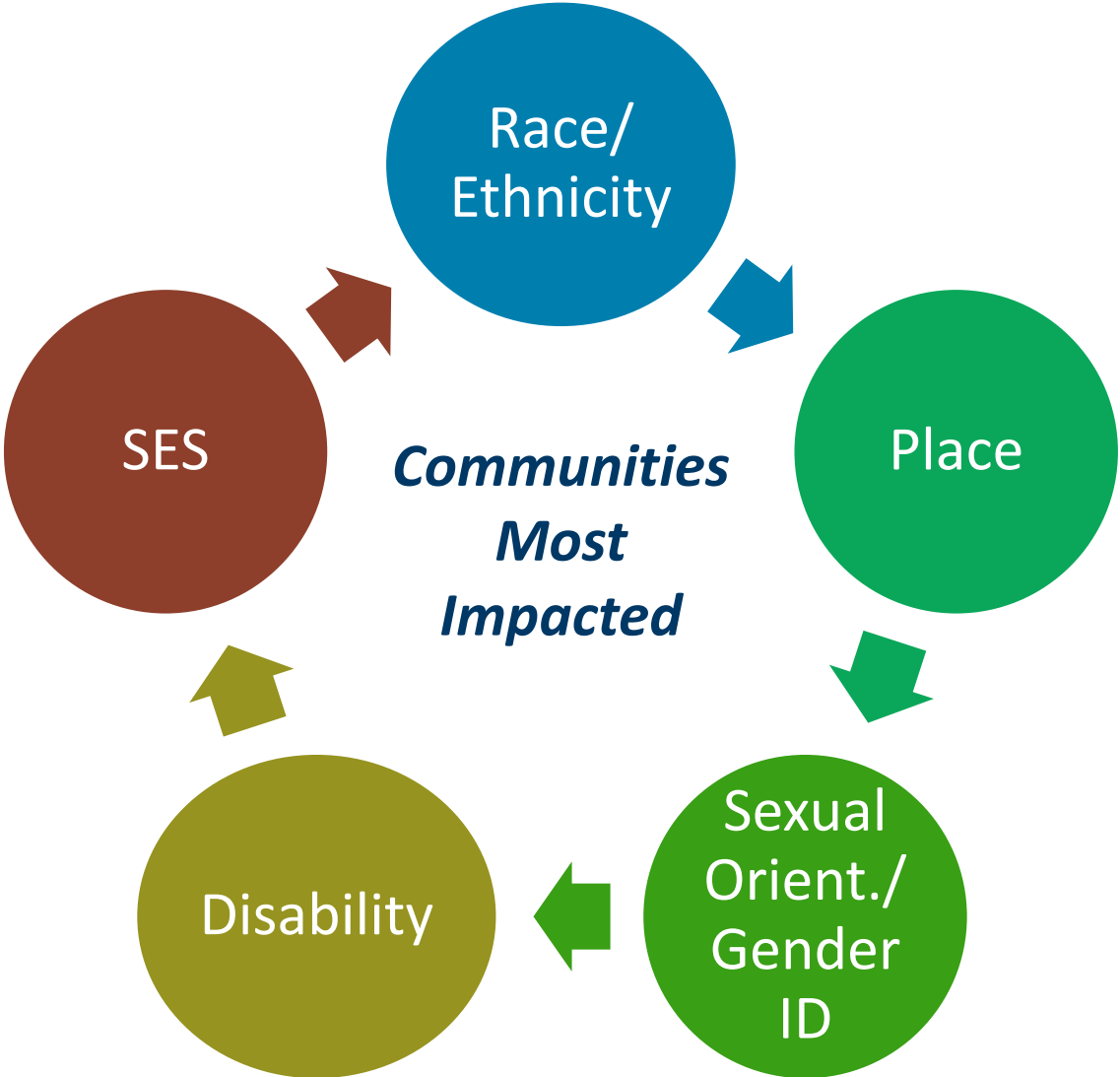


We **amplify the work of communities** most impacted by health inequities and support them to drive their own solutions.

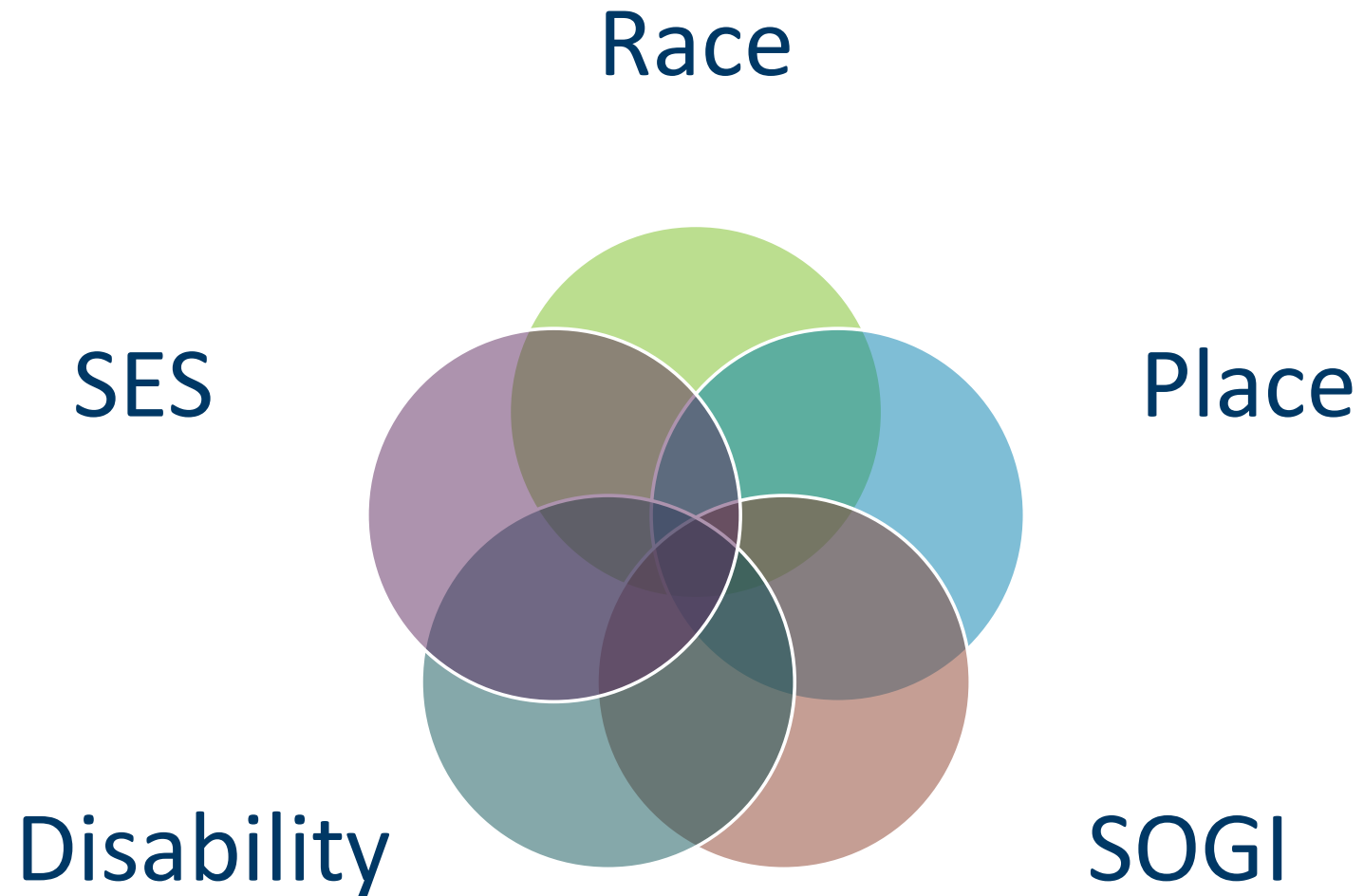


DEPARTMENT OF HEALTH
CENTER FOR HEALTH EQUITY

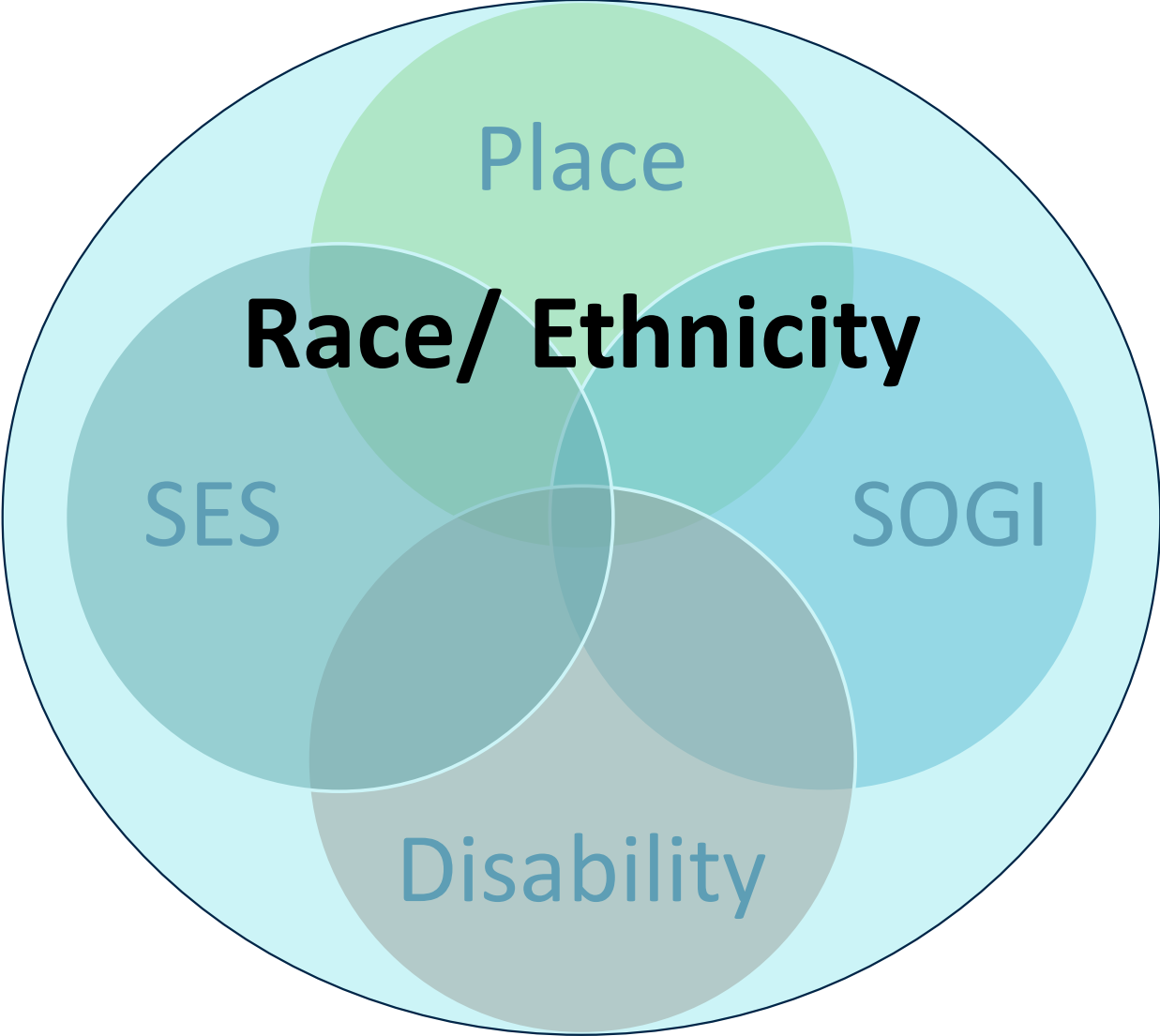
Priority Populations



Intersectionality



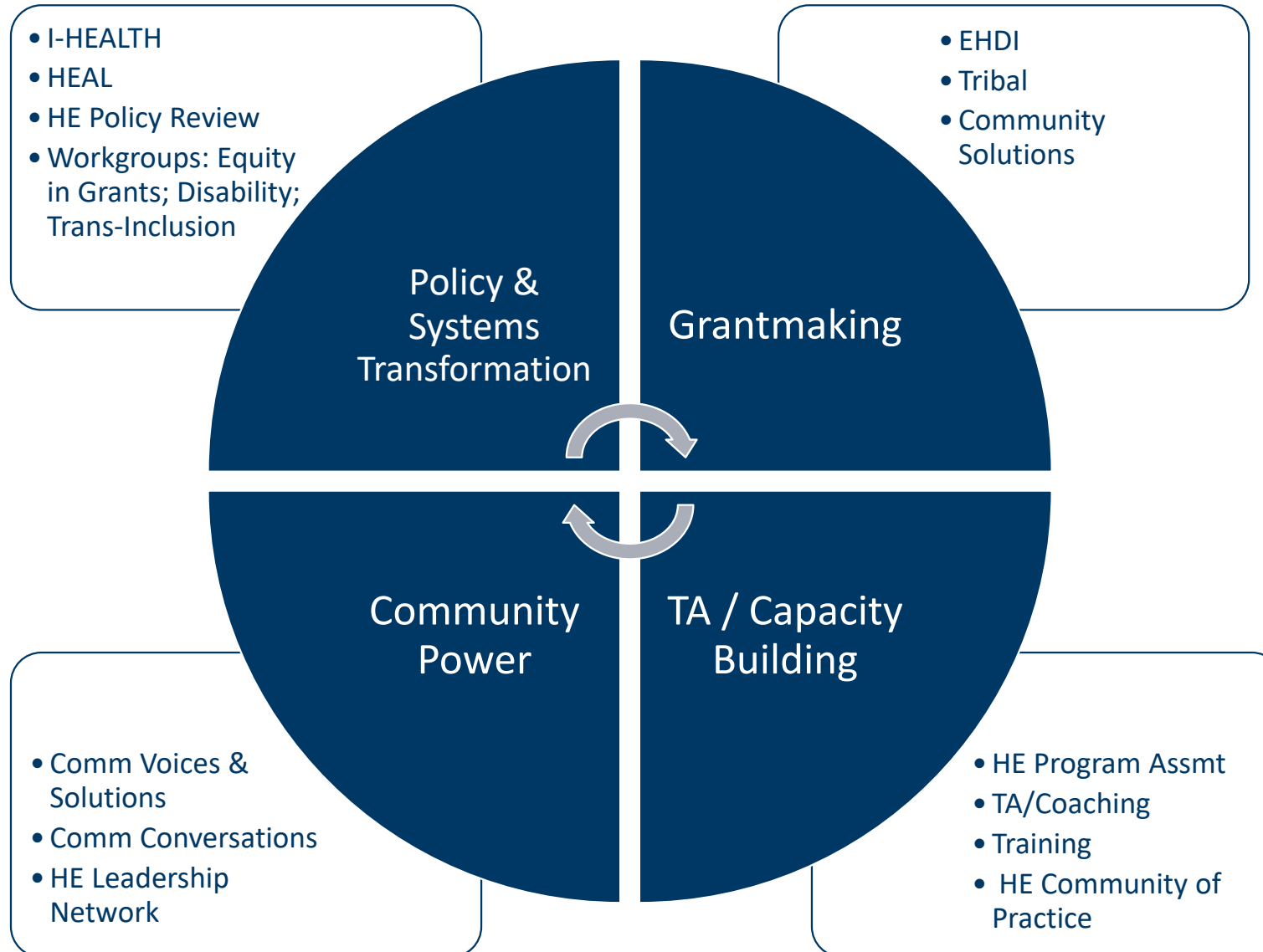
Intersectionality Leading w/ Race



2017 Statewide Health Assessment

- Shows a picture of health and well-being across the state, including:
 - Who is healthy and who is not?
 - What conditions shape health for all the different populations in Minnesota?
 - What do we have, and what do we need, to assure that all people in Minnesota can enjoy healthy lives and healthy communities?

Functional Areas & Programs



Current and recent projects

- Health Equity Advisory and Leadership Council (HEAL)
- I-HEALTH
- Health Equity Leadership Network
- Eliminating Health Disparities Initiative
- U.S. Born African American Infant Mortality Project
- Community Solutions Fund
- Community Conversations
- Trainings for MDH staff (racial equity and narrative)

Health Equity Advisory and Leadership (HEAL) Council



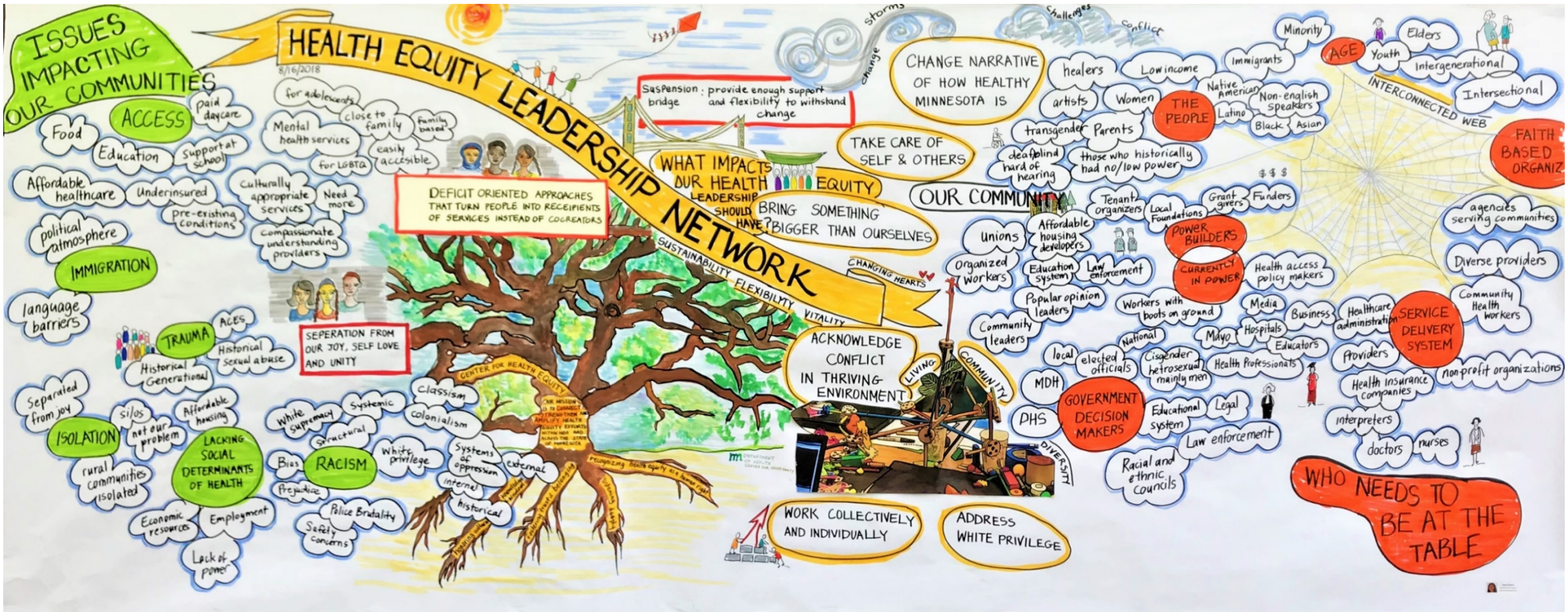
Ensuring communities most impacted by inequities are at the table for decision-making at MDH



Purpose of I-HEALTH:

- To advise and oversee implementation of health equity strategies at MDH
- To streamline coordination of health equity activities, policies and projects across the agency, and
- To foster greater collaboration amongst MDH divisions/offices around health equity.

Health Equity Leadership Network



Eliminating Health Disparities Initiative Grant



Grant program created to address health inequities for populations of color and American Indians across 8 priority health areas



Community Solutions Fund



- Improve child development outcomes related to the well-being of children of color and American Indian children from prenatal to grade 3 and their families.
- Reduce racial disparities in children's health and development from prenatal to grade 3.
- Promote racial and geographic equity.

Trainings for MDH Staff

- Racial Equity and Changing the Dominant Narrative Trainings for MDH Staff





COVID Response Roles -

- Cultural, Faith, Disabilities (CFD) Team
 - Resources; Translation; Community Liaisons; Leadership; Training; Community engagement
 - \$4 million out to CBOs, diverse media
- COVID Community Coordinators (CCCs)
 - \$20 million out to 40 CBO's led BY and FOR BIPOC, LGBTQ+, Disability Communities
- Testing
 - Tested over 120,000 Minnesotans since May 2020

2020 Accomplishments (continued)

- COVID Response Roles -
 - Vaccines
 - Leading state vaccine equity and engagement work
 - Governor's Community Resilience & Recovery Work Group
 - Tribal health
 - Local national presentations, conversations, discussions

- Center for Health Equity Listserv - <http://www.health.state.mn.us/communities/equity/>
- MDH Health Equity Resource Library - <http://www.health.state.mn.us/communities/equity/reports/>
- Health Equity Guide – MN Case Study - <http://healthequityguide.org/case-studies/minnesota-changes-the-narrative-around-health-equity/>
- MN Statewide Health Assessment - <http://www.health.state.mn.us/statewidehealthassessment/>
- Healthy MN Partnership - <http://www.health.state.mn.us/healthymnpartnership/>

Thank you!

Sara Chute

Sara.chute@state.mn.us

651-201-5543